

**Field bindweed**      *Convolvulus arvensis* L.

**Family:** Convolvulaceae (Morningglory family)

**Life cycle:** Perennial, reproduces by seed and deep rhizomes

**Habitat:** Crop fields, fence lines, waste areas, ornamental plantings

**General description:** Twining, herbaceous vine with alternate, lanceolate leaves. White, funnel-shaped flower with two small bracts on flower stalk.

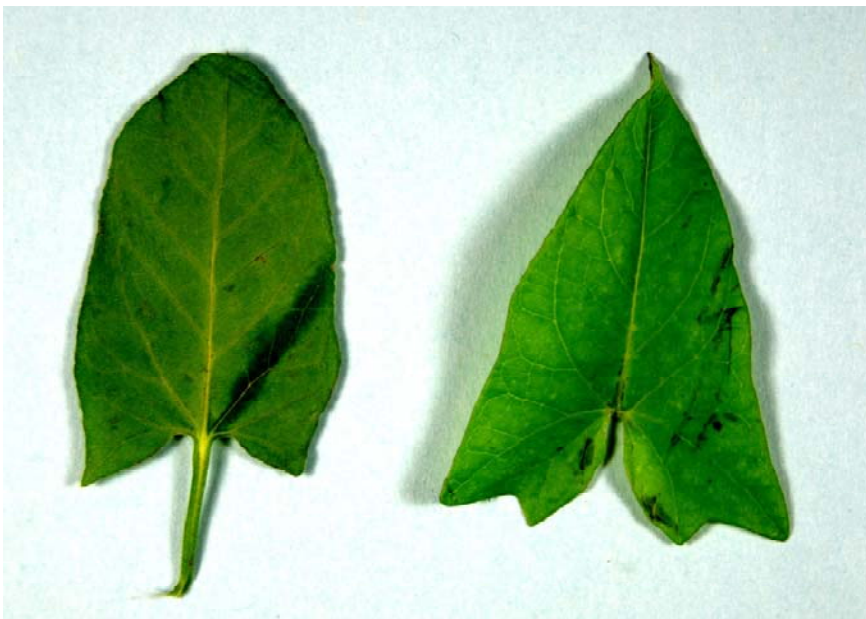
**Key ID traits:** Base of leaves without distinct lobe; small bracts at base of flowers.

**Similar species:** Hedge bindweed generally has larger leaves without basal lobes; wild buckwheat is an annual and has ochrea at the base of leaf petioles and inconspicuous flowers; honeyvine milkweed has opposite leaves; morningglory species in Iowa either have heart-shaped (tall) or three-lobed (ivyleaf) leaves.

**Miscellaneous:**



Small sepals on field bindweed



Field bindweed (left), hedge bindweed (right)